

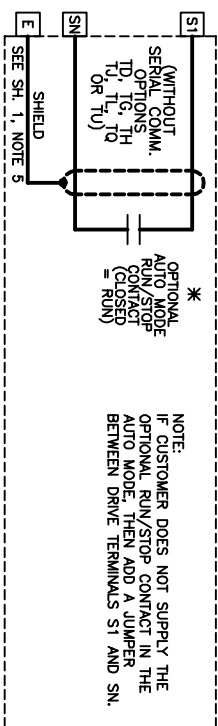
* - INDICATES CUSTOMER WIRING.
 --- SEE DRAWING UDE00437 FOR CUSTOMER CONNECTION TABLES.
 --- SEE DRAWING UDE00392 FOR DRIVE PARAMETER SETTINGS.

- NOTES:**
1. CONNECTED TO THE CABINET. CUSTOMER TO CONNECT THE CABINET GROUND LUGS TO EARTH GROUND AND UTILITY GROUND.
 2. FITTINGS HAVING THE SAME ENVIRONMENTAL RATING AS THE ENCLOSURE SHALL BE USED.
 3. WITHOUT THE CIRCUIT BREAKER (OPTION PC OR PE), OR DISCONNECT SWITCH (OPTION PD), THE DISCONNECT MEANS MUST BE SUPPLIED BY THE CUSTOMER.
 4. BRANCH CIRCUIT PROTECTION TO BE SUPPLIED BY THE CUSTOMER WHEN NOTED ON THE CABINET DATA NAMEPLATE.
 5. INSULATED TWISTED SHIELDED WIRE IS REQUIRED. SHIELD TO CONNECT TO PROPER TERMINALS AS SHOWN. CONNECT THE SHIELD ONLY AT THIS END. STUB AND ISOLATE THE OTHER END. DO NOT RUN THESE WIRES IN THE SAME CONDUIT AS THE AC POWER AND AC CONTROL WIRES. KEEP ALL WIRING UNDER 50m IN LENGTH.
 6. FOR A CONTROL TRANSFORMER T1 POWER RATING OF 350VA OR GREATER, SECONDARY FUSE F6 IS ADDED.
 7. IF AC MOTOR IS FURNISHED WITH A N.C. THERMAL SWITCH F6 IS ADDED.
 8. DRIVE TO COAST TO STOP UPON AN AC MOTOR THERMAL TRIP.
 9. WIRE THE N.C. THERMAL SWITCH BETWEEN DRIVE TERMINALS S8 AND SN. AS PER NOTE 5 ABOVE.
- OPTIONALS: ID, IG, TH, TL, TO, OR, TU CONTROL. (SEE UDE00437 FOR MORE INFORMATION)
 OPTIONS: T6, T7, T8, T9. (SEE NOTE 6)

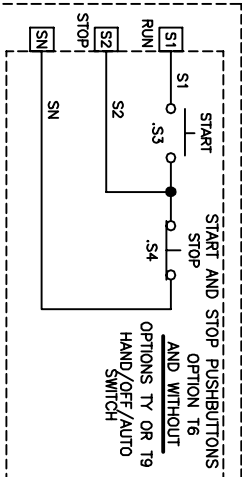
REV.	DESCRIPTION	ECO #	DRAWN BY	DATE	DESIGNED BY	DATE	CHECKED BY	DATE	DATE	REVISED BY	DATE
03	ADD MISSING REF NUMBERS 201-241 ON PAGE 2	6330	DJP	06/12/15	D.R. CMEJLAK	09/18/13					
02	CHANGED HOA TO A3 INPUT	5186	NSL	04/8/14	K. FLIERL	09/18/13					
01	ADDED "IF CABINET BLOWER(S) PRESENT" NOTE	5097	DRC	03/07/14	D. PACKER	09/18/13					

YASKAWA
 THIS DOCUMENT AND INFORMATION CONTAINED HEREIN IS CONFIDENTIAL AND NOT TO BE REPRODUCED, COPIED, OR DISCLOSED IN WHOLE OR IN PART WITHOUT THE EXPRESS WRITTEN CONSENT OF YASKAWA AMERICA INC. © 2015
 D. PACKER
 K. FLIERL
 D. PACKER
 DS_Q1C1.01

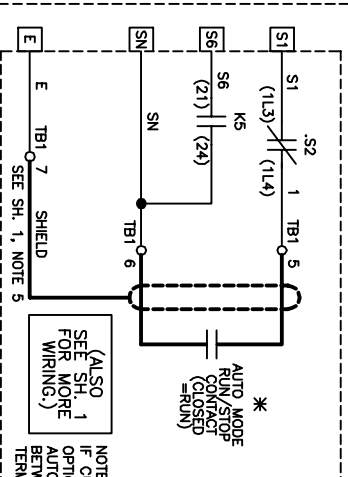
RUN/STOP CONTROL (FROM SHEET 1)



NOTE:
IF CUSTOMER DOES NOT SUPPLY THE
OPTIONAL RUN/STOP CONTACT IN THE
AUTO MODE, THEN ADD A JUMPER
BETWEEN DRIVE TERMINALS 5 AND SN.



OR



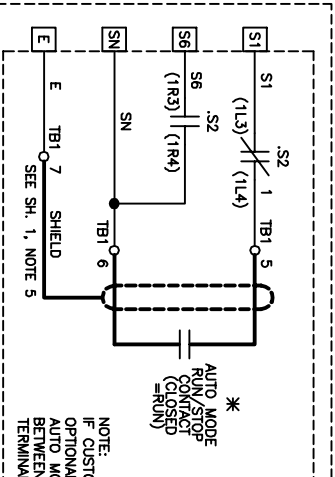
NOTE:
IF CUSTOMER DOES NOT SUPPLY THE
OPTIONAL RUN/STOP CONTACT IN THE
AUTO MODE, THEN ADD A JUMPER
BETWEEN TERMINAL BLOCK TB1
TERMINALS 5 AND 6.

CONTACT SEQUENCE CHART FOR S2
X - INDICATES CONTACT CLOSED

CONTACT	POSITION	MANUF. LOCATION / TYPE
1	HAND	1RO
2	X	1LO

* SCHEMATIC SHOWS THIS POSITION.

OPTION T6
START AND STOP PUSHBUTTONS
AND WITH
OPTION T9, OR PART OF OPTION T9
HAND/OFF/AUTO SWITCH



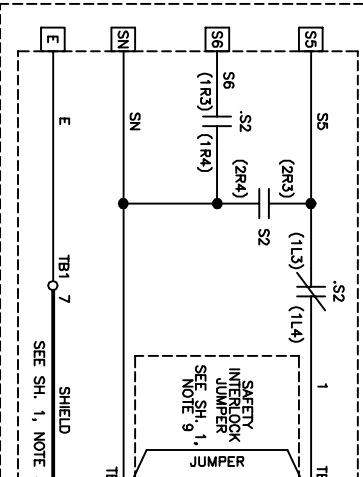
NOTE:
IF CUSTOMER DOES NOT SUPPLY THE
OPTIONAL RUN/STOP CONTACT IN THE
AUTO MODE, THEN ADD A JUMPER
BETWEEN TERMINAL BLOCK TB1
TERMINALS 5 AND 6.

CONTACT SEQUENCE CHART FOR S2
X - INDICATES CONTACT CLOSED

CONTACT	POSITION	MANUF. LOCATION / TYPE
1	HAND	1RO
2	X	1LO

* SCHEMATIC SHOWS THIS POSITION.

OPTION T9, OR PART OF OPTION T9
HAND/OFF/AUTO SWITCH
AND WITHOUT
OPTION T6, TG, TH, TU, TL, TO OR TU
SERIAL COMMUNICATIONS



NOTE:
IF CUSTOMER DOES NOT SUPPLY THE
OPTIONAL RUN/STOP CONTACT IN THE
AUTO MODE, THEN ADD A JUMPER
BETWEEN TERMINAL BLOCK TB1
TERMINALS 5 AND 6.

CONTACT SEQUENCE CHART FOR S2
X - INDICATES CONTACT CLOSED

CONTACT	POSITION	MANUF. LOCATION / TYPE
1	HAND	1RO
2	X	1LO
3	X	2RO

* SCHEMATIC SHOWS THIS POSITION.

OPTION T9, OR PART OF OPTION T9
HAND/OFF/AUTO SWITCH
AND WITH
OPTION T6, TG, TH, TU, TL, TO OR TU
SERIAL COMMUNICATIONS

SEE SHEET 1 FOR NOTES.

YASKAWA		DESIGNED BY	D. PACKER	DATE	09/18/13	TITLE	SCHEMATIC DIAGRAM
		CHECKED BY	D.R. CMEIAK	DATE	09/18/13	REV	1
		APPROVED BY	K. FLIERL	DATE	09/18/13	SIZE	D
		ORIGINAL DESIGNER	D. PACKER	DATE	09/18/13	REGION	03
						PAGE	2 of 2
						DRWING #	DS-Q1C1.01

THIS DOCUMENT AND INFORMATION CONTAINED HEREIN ARE CONFIDENTIAL AND CANNOT BE COPIED OR DISCLOSED IN WHOLE OR IN PART WITHOUT THE EXPRESS WRITTEN CONSENT OF YASKAWA AMERICA INC.